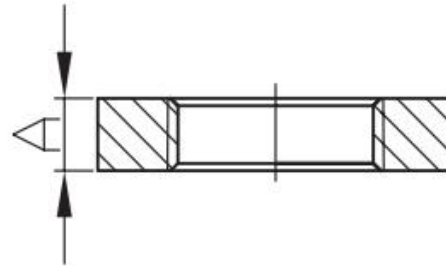


Malleable Iron Backnut



- Certificate: FM Approved / UL Listed / BSI / LPCB / NSF 61
- Size: DN6 - DN100
- Pressure: 2.5 Mpa / PN25
- Dimensions: ASME B16.3, B16.14
- Material: ASTM A197/A197M
- Threaded: ASME B1.20.1
- Surface: Black / Electrical galvanized / Hot-dip galvanized



Available size

| | | | | | | | |
|-----------|-------|-------|-------|------|-------|-----|------|
| Size | Inch | 1/8 | 1/4 | 3/8 | 1/2 | 3/4 | 1 |
| | mm | 6 | 8 | 10 | 15 | 20 | 25 |
| Dim. (mm) | A Min | 4.8 | 6.4 | 7.1 | 7.9 | 8.6 | 9.7 |
| Size | Inch | 1 1/4 | 1 1/2 | 2 | 2 1/2 | 3 | 4 |
| | mm | 32 | 40 | 50 | 65 | 80 | 100 |
| Dim. (mm) | A Min | 10.7 | 11.9 | 13.5 | 15 | 17 | 20.3 |